

About Sparton

- Machining and Sheet Metal in one facility
- AS9100 / ISO 9001 Certified, ITAR Registered
- Superior Quality and Customer Service
- Family owned and operated
- 80,000 sq ft well maintained building
- Established in 1972, Approx 80 employees

Industries Served

- Military, Defense & Aerospace
- Semi-Conductor Equipment
- Vacuum & Piping Systems
- Medical Equipment
- Filtration Equipment
- Printing Equipment
- Datacom & Telecom
- Pharmaceutical and Biotech
- Fire Protection Equipment
- NEMA 6, 6P

Materials Commonly Used

Aluminum Alloys:

- 1100,2011,2024,5052,6061,6063,7075

Stainless Steel Alloys:

- 302,303,304,304L,316,316L,321,430, and 17-4

Steel Alloys:

- 1018, A1008, A1020, A1011, A36, A606, A588
46100 armor plate, 12560 armor plate

Other Materials:

- Titanium, Nickel, Brass, Copper and Various Polymers such as Polypropylene, UHMW Polypropylene, Delrin, Nylon, etc...

Typical Quantity Ordered

Order quantities typically range from low to several thousand parts. We do design & prototype through production orders.

Email Drawings For Quote

We are capable of viewing and printing drawings for files of the following formats: DXF, DWG, SolidWorks and PDF.

Please email all requests for quote with drawings to rfq@sparton.biz, with the salesperson's name as the subject.



Quality Assurance

Our QA department is both well staffed and equipped to assure our quality standards are maintained. The following is a very condensed list of key inspection equipment & systems used at Sparton

- AS9100 / ISO 9001 Certified
- ITAR Registered
- Zeiss Contura CMM
- Zeiss O-inspect CMM (w/ vision)
- Fabrivation Flat Part Scanner
- Surtronic 3+ Surface Measurement System
- Nine Electronic Height Gages
- Minolta Multi-Gloss Meter (Paint Inspections)
- 4 QA substations equipped w/ electronic height gages on production floor



Zeiss CMM that inspects with probes and optics

Sparton Philosophy

We have been in the custom manufacturing business for over 50 years, and have been evolving since our modest beginning. Our corporate goal has remained the same since those days: Build great customer relations by building the best product at a fair value. Our secret is to incorporate more aesthetic value than our peers which makes buyers and engineers alike, proud to be affiliated with Sparton. Our customer and employee retention has been excellent through these years.

Please come visit our facility in order to see how well organized and equipped we are to handle your business, your parts, and your ever changing needs. We will handle your prototypes through production and your Kanban style blanket orders.

Location

We are located on the Southern NH border with quick access to both RT 3 and RT 93. We service all of New England with our cargo vans, 26' box truck, and Outside Carriers.



Sparton Technology Corporation
8 Hampshire Drive - Hudson, NH 03051-4919
Phone: (603) 880-3692 www.sparton.biz

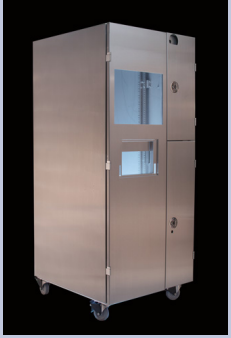
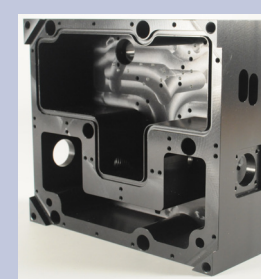
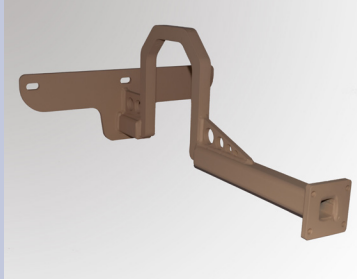
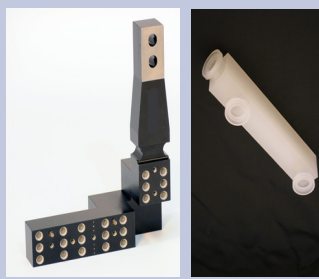
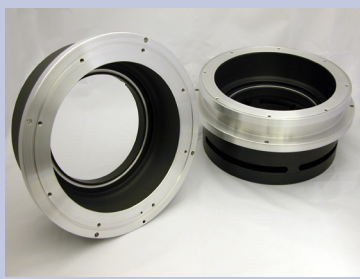
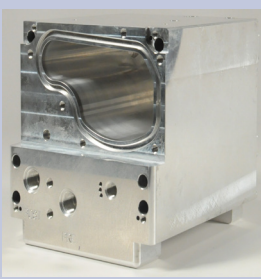
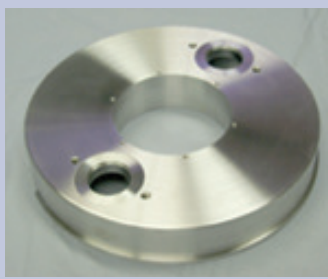
SPARTON TECHNOLOGY CORPORATION

CNC Machining
Precision Sheet Metal Fabrication
Value Added Assembly



(603) 880-3692
www.sparton.biz
AS9100 / ISO 9001 Certified
ITAR Registered





Precision Machining Division

23 Milling Centers

5 Axis Milling Centers

- DMG Mori DMU 50
- Matsuura MX520 w/ 4 pallets, & Matsuura MX520
- Matsuura MX330 w/ 10 pallets
- Robo-Drill with Robotic cell, & Robo-drills (2),

Multi Pallet Horizontal CNC's

- Matsuura HPlus 300PC11, 240 tool, 11 pallets
- Matsuura MAM-500, 210 tool, 11 pallets
- Matsuura HPlus 405 240 tool, 6 pallets
- Mori-Seiki SH 403, 60 tool, 3 pallets
- Mori-Seiki NHX 4000, 2 pallets

2 Pallet CNC Vertical Machining Centers

- Matsuura RA's (3) Robo-drills (2) Matsuura ES 800

CNC Vertical Machining Centers

- Mori-Seiki MV-65 vertical (60x25x33 XYZ cap.)
- Matsuura MC-800VF vertical (31.5x17.3x19.2 XYZ cap.)
- (2) Mori-Seiki Dura Mill, Robo-drill

7 CNC Turning Centers

- Mori-Seiki NLX2500 12" Capacity & a sub spindle
- Nakamura Tome WY-100
- Nakamura Tome TW-20 7-Axis,
- Nakamura Tome WT-100
- Methods/Nakamura SC-300 with live milling tools
- Mori-Seiki SL-150, Mori-Seiki NL2000
- Turning diameter capacity is 3 inches through spindle

Military and Aerospace Capabilities

- AS9100 / ISO 9001 Certified
- ITAR Registered
- 5 Axis CNC Machining
- CNC Laser Cutting
- Certified Welding
- Lot Tracking of Material
- ERP System enabling real time knowledge of where your parts are at all times



Precision Sheet Metal Fabrication Division

Laser Cutting

- 4kw Mitsubishi LVP 3015, 60"x120" capacity
- 4kw Fiber IPG LaserCube

2 CNC Turret Punch Presses

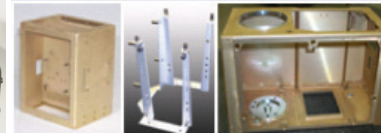
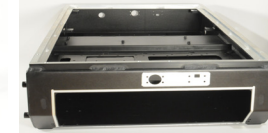
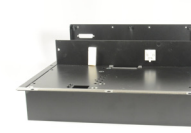
- Amada Pega-King 358, Load/Unload
- Amada Pega-Queen 345

4 Press Brakes

- (2) Amada HG8025 w/offline programming
- Toyokoki, 90 Ton x 8 feet
- Diacro, 17 Ton x 4 feet

Welding

- (6) TIG, 6 MIG 300 & 350 amps
- 125 KVA 3 phase Spot Welder
- 100 KVA 3 phase Spot Welder
- (2) Motoman Robotic Welding Cells



Grinding

- 20 Various grinding / edging stations
- 2 Brush Finishing Machines
- 2 Stroke Sanders, 2 Wet sanders

Hardware Inserting

- (3) Haeger 824, 8 Ton capacity press with modular autofeed system, 24" throat
- Haeger, 6 Ton capacity press

Value Added Assembly & Kitting

We have an assembly room available to assemble your projects complete with tables, air lines, component bins, shelving, and an assembly crew. This is a portion of the business we are excited to grow, and are ready to quote mechanical to light electronic assemblies and subassemblies.



5 Axis CNC Machine



CNC Milling Machine



CNC Lathe



CNC Punch Press



View of Laser and Material Tower



Laser Cutting a Part